



NGFA Ag Transportation Symposium

Outlook & Issues Confronting Private Railcars

Tuesday, May 12, 2009

**Roger D. Wynkoop, Chief Commercial Officer
TrinityRail®**

Rail Group



Leasing & Management Services Group



Inland Barge Group



Construction Products Group



Energy Equipment Group



TrinityRail Overview



Tank Cars

- Pressure, Non-Pressure & Specialty Tank Cars



Freight Cars

- Complete Line Of Freight Cars



Railcar Leasing (TILC)

- Leases For Freight & Tank Cars



Railcar Parts & Components

- Full Line Of Railcar Parts & Components



Railcar Repair

- Railcar Repair Services



Railcar Management

- Railcar Fleet Maintenance & Management Services

Rail Industry Historical Shipment Summary

AVG. ANNUAL PRODUCTION:

1960s: 61,600

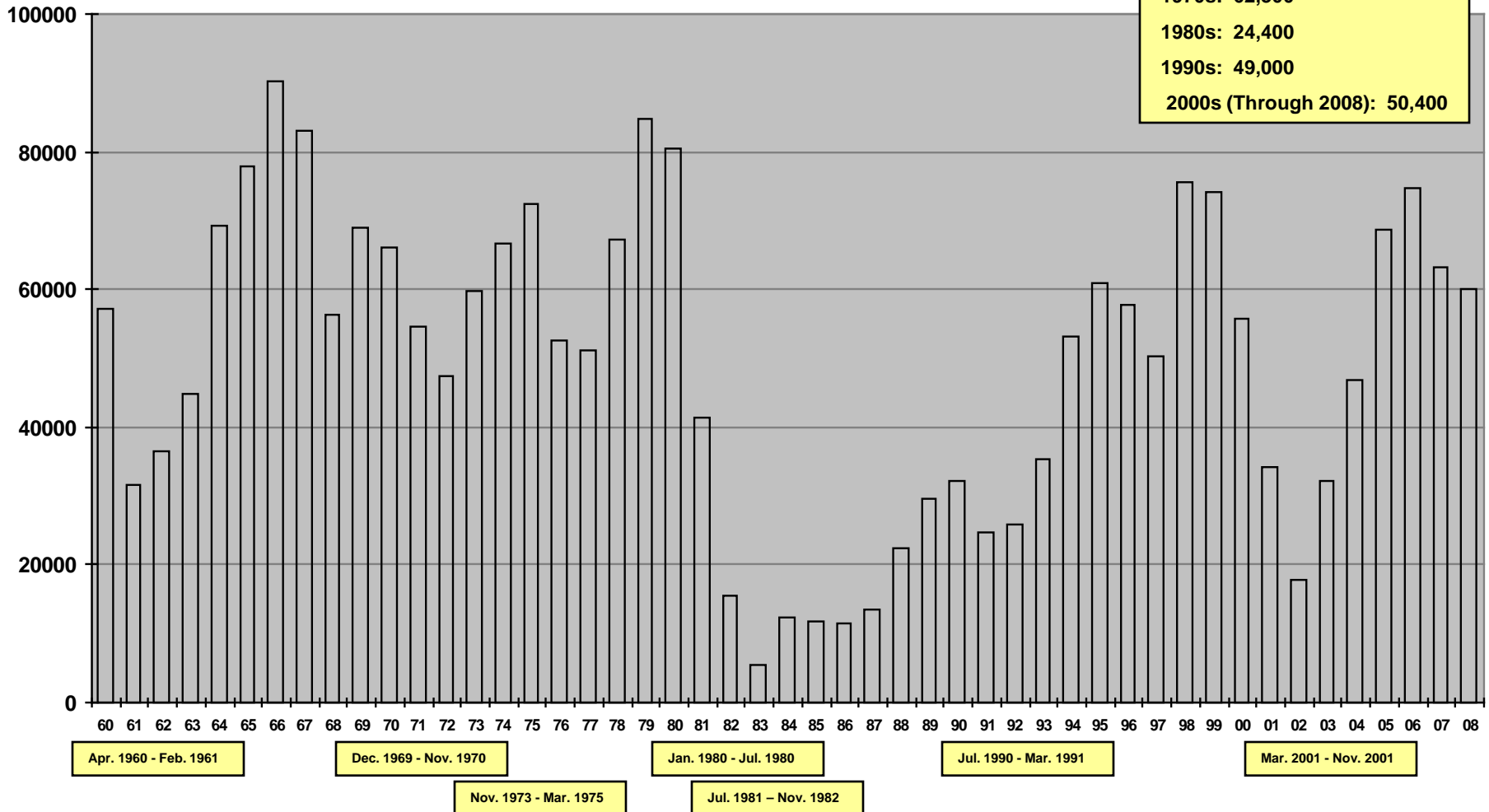
1970s: 62,300

1980s: 24,400

1990s: 49,000

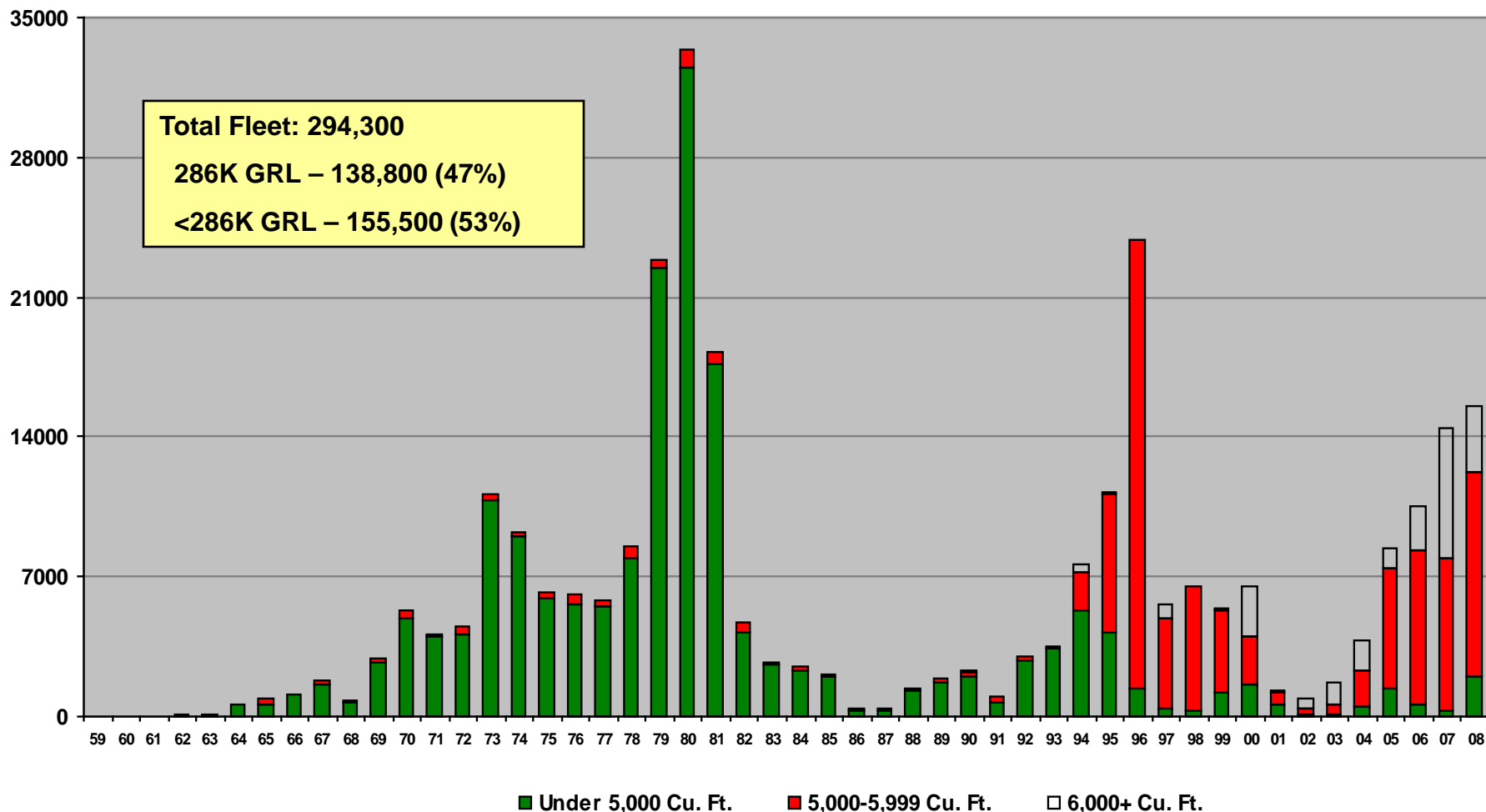
2000s (Through 2008): 50,400

Yearly Deliveries



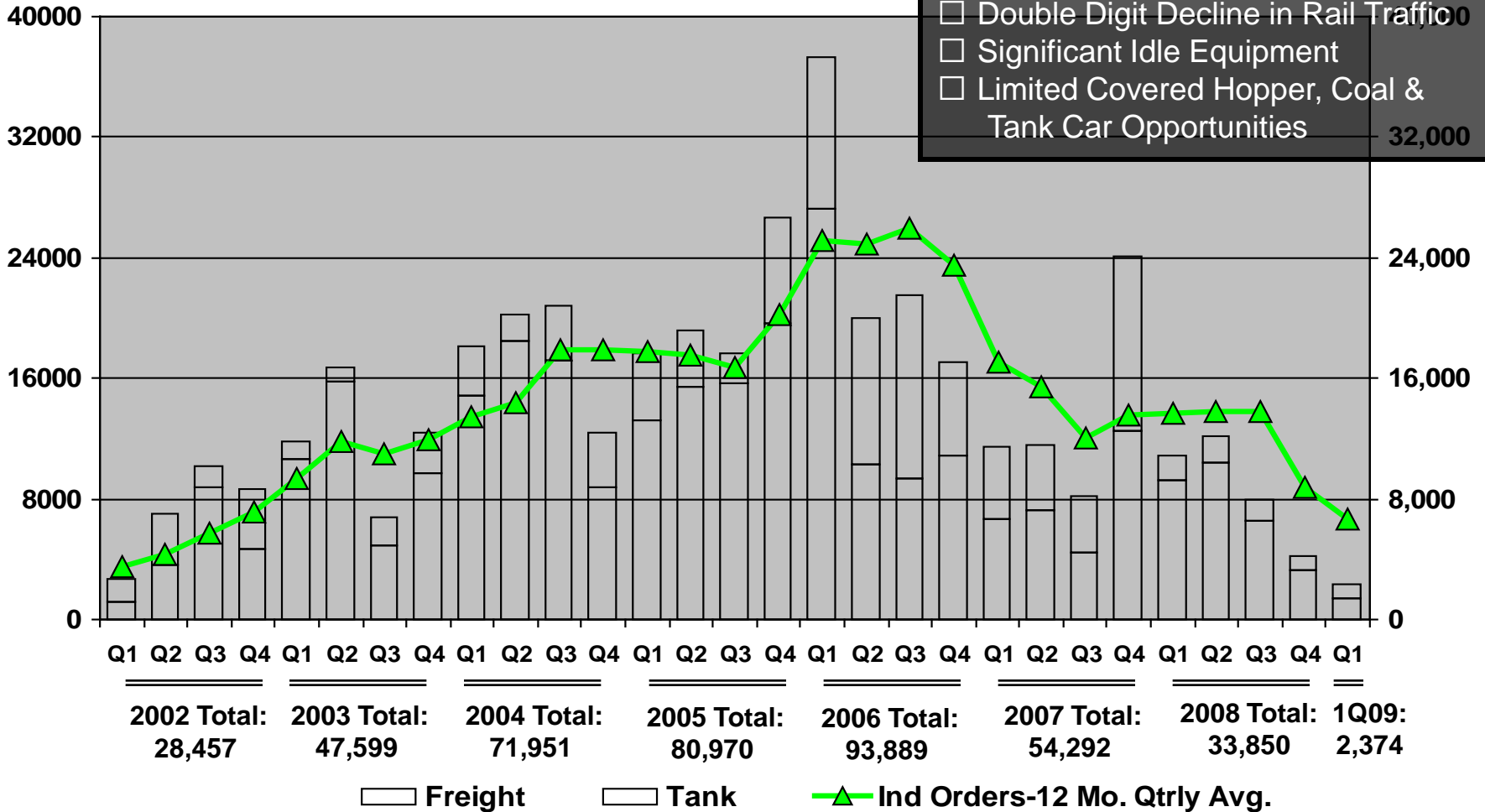
C113 & C114 Covered Hopper Fleet

Fleet By Year Built



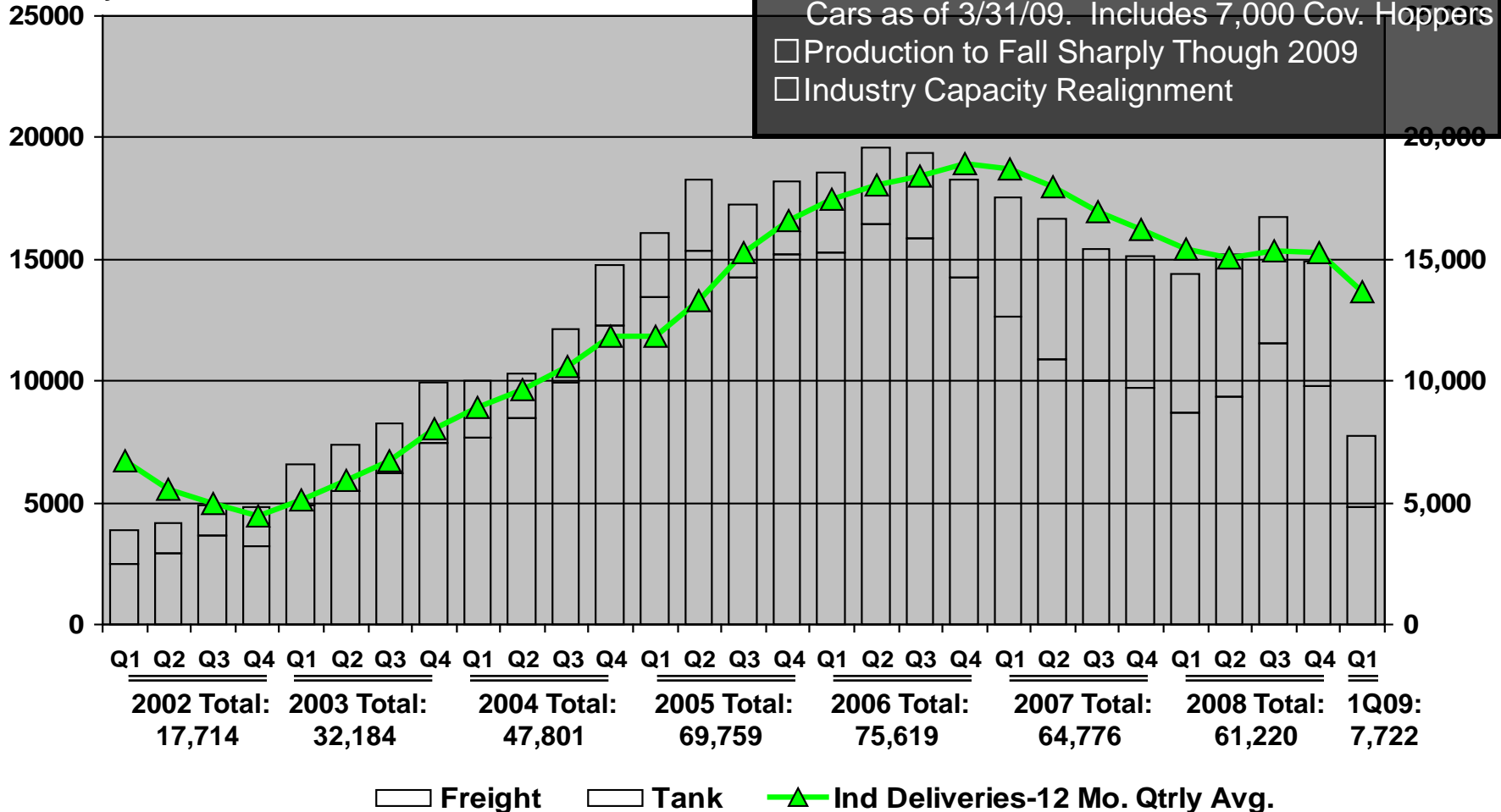
Rail Industry New Car Demand

Industry Orders



Rail Industry New Car Deliveries

Industry Deliveries



Railcar Delivery Forecast

	2007	2008	2009F	2010F	2011F	2012F	2013F	2014F
Covered Hoppers								
Over 5,500 Cu. Ft.	8005	4266	750	445	1572	4556	7916	8133
3,500-5,500 Cu. Ft.	8122	10025	3522	3036	3996	4841	7344	7538
Under 3,500 Cu. Ft.	4313	2482	1409	567	983	1993	3815	4166
Total Covered Hoppers	20440	16773	5681	4048	6551	11390	19075	19837
Total Freight Car	41723	38254	12326	7447	20633	40774	54357	56724
Tank Car	21433	21700	10066	6211	8624	13391	13142	13376
TOTAL	63156	59954	22392	13658	29257	54165	67499	70100